



www.knights.uk.com

CARDIFF

VALE

CAERPHILLY

BRISTOL

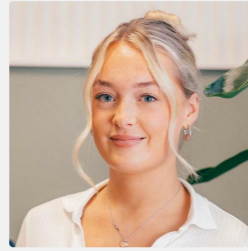


Queen Street

WEST END



Comments by Miss Georgia Farr



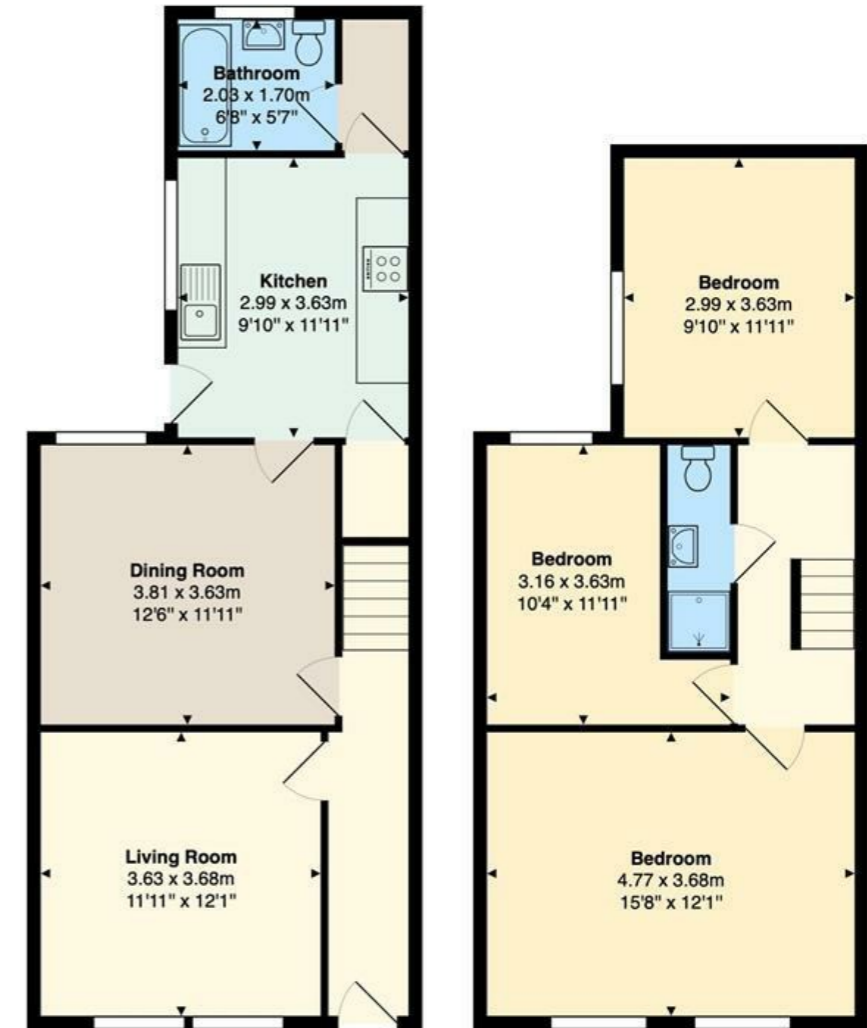
Property Specialist
Miss Georgia Farr
Sales Negotiator

georgia@jeffreycrossandknights.co.uk



Comments by the Homeowner

Queen Street, Barry, CF62 7EE



Total Area: 98.5 m² ... 1060 ft²

All measurements are approximate and for display purposes only



Queen Street

West end, Barry, CF62 7EE

£230,000



3 Bedroom(s)



2 Bathroom(s)



1280.92 sq ft



Contact our
Knights Barry Branch

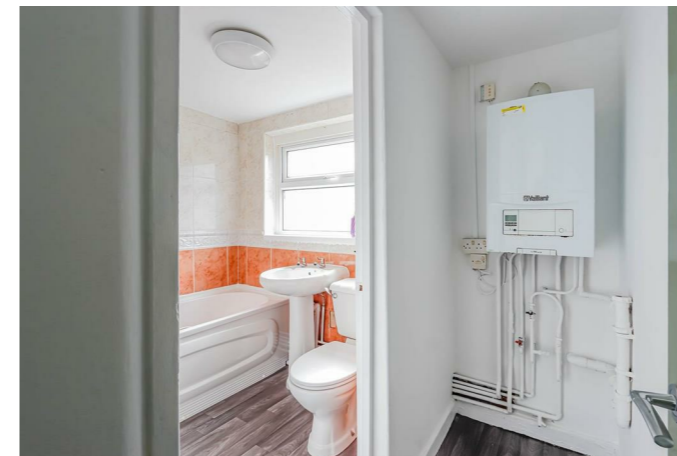
01446 700222

Situated in the heart of Barry on the sought-after Queen Street, this beautifully presented mid-terrace home offers an exceptional opportunity for first-time buyers, investors, or those searching for a spacious home within a thriving community. Extending to approximately 1,281 sq ft, the property has been tastefully refurbished throughout to provide stylish and comfortable living accommodation.

The ground floor features two generous reception rooms, ideal for both entertaining and everyday family living, with a layout that creates a welcoming and versatile space. Upstairs, the property offers three well-proportioned double bedrooms and two modern bathrooms, perfectly suited to growing families or visiting guests.

Conveniently positioned close to a range of local amenities, reputable schools, and excellent transport links, the location is ideal for those seeking both accessibility and community living. Offered to the market with no onward chain, the property also benefits from a straightforward purchase process.

Combining spacious interiors, contemporary finishes, and a highly desirable location, this charming Queen Street home is a fantastic opportunity not to be missed.





HALLWAY 3'05" / 2'10" (1.04m / 0.86m)

LIVING ROOM 12'01" x 11'11" (3.68m x 3.63m)

DINING ROOM 12'08" x 11'11" (3.86m x 3.63m)

KITCHEN 11'11" x 7'10" (3.63m x 2.39m)

UTILITY ROOM 2'08" x 6'09" (0.81m x 2.06m)

BATHROOM 6'02" x 5'07" (1.88m x 1.70m)

BEDROOM ONE 16'01" x 11'11" (4.90m x 3.63m)

BEDROOM TWO 7'04" x 11'11" (2.24m x 3.63m)

BEDROOM THREE 7'10" x 11'11" (2.39m x 3.63m)

SHOWER ROOM 2'08" x 8'10" (0.81m x 2.69m)

CARDIFF

VALE

CAERPHILLY

BRISTOL



